

# HEC

Series	696
Contacts	4+PE, 8 (4 + 3+PE), 12
Rated current	32 A – 3A
Rated voltage	600 V – 60 V
Degree of protection	IP68, IPX9K
Contact plating	Ag (silver)
Termination	crimp



## 696 HEC Series • Hinged Cover

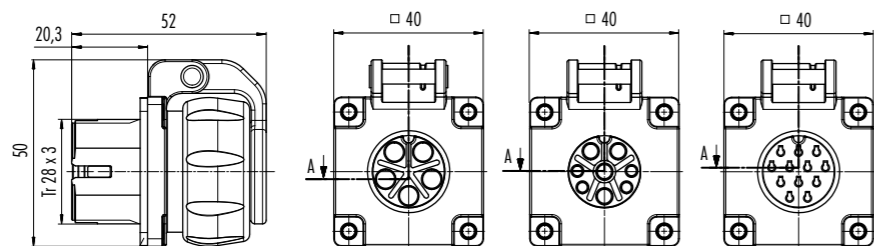
- Compact design: Female panel mount connector with hinged cover
- For all pole numbers (4+PE, 4 + 3+PE, 12)
- Easy and fast assembly
- IP68/IPX9K
- Available from 02/18 on



**Description**

Female panel mount connector, hinged cover

**Drawing**



Flat seal enclosed loose

**Contacts**

Contacts	Ordering-No.
4+PE	09 6492 200 05
4+3+PE	09 6504 200 08
12	09 6520 200 12

Panel cut out see HEC POWER